

Std. 6 to 10  
Guj. Med.

Std. 11-12 Commerce  
Eng/Guj Med. | GSEB/CBSE



**MAHI**  
COMMERCE ZONE

2023

1<sup>st</sup>  
Mount Carmel



A1  
Grade

Vidhi Jain  
PR :99.95

2<sup>nd</sup>  
Mount Carmel



A2  
Grade

Akshar Kharadi  
PR :99.60

3<sup>rd</sup>  
Mount Carmel



A2  
Grade

Riya Shah  
PR :99.44

1<sup>st</sup>  
St Xaviers



A2  
Grade

Yug Mistri  
PR :99.44

4<sup>th</sup>  
Mount Carmel



A2  
Grade

Riddhi Makwana  
PR :99.41

2023

CBSE



A1  
Grade

Jay Joshi  
2<sup>nd</sup> Mahapragya Vidya Niketan



A2  
Grade

Srijan Tuteja  
Delhi Public School



A2  
Grade

Prapti Akhiani  
1<sup>st</sup> Hillwood School

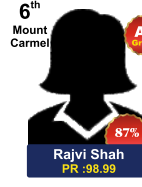
5<sup>th</sup>  
Mount Carmel



A2  
Grade

Sonia Dennis  
PR :99.38

6<sup>th</sup>  
Mount Carmel



A2  
Grade

Rajvi Shah  
PR :98.99

3<sup>rd</sup>  
St Xaviers



A2  
Grade

Pratham Gulve  
PR :98.94

4<sup>th</sup>  
RG School



A2  
Grade

Disha Darji  
PR :98.35

1<sup>st</sup>  
Safal Vidyalaya



A2  
Grade

Nirjar Desai  
PR :98.12

8<sup>th</sup>  
Darshan Vidyalaya



A2  
Grade

Avani Makvana  
PR :97.80

7<sup>th</sup>  
Mount Carmel



A2  
Grade

Jenisha Raval  
PR :97.74

5<sup>th</sup>  
RG School



A2  
Grade

Vidhi Chavda  
PR :97.31

3<sup>rd</sup>  
Achievers



A2  
Grade

Harshi Vyas  
PR :96.76

9<sup>th</sup>  
Mount Carmel



A2  
Grade

Yug Modi  
PR :96.34

2022

1<sup>st</sup>  
SVP School



A1  
Grade

Smit Prajapati  
PR :99.66 | 639/700

1<sup>st</sup>  
M B Patel School



A1  
Grade

Nirali Panchal  
PR :99.54 | 634/700

1<sup>st</sup>  
R G Patel School



A1  
Grade

Prexa Patel  
PR :99.47 | 632/700

1<sup>st</sup>  
Mount Carmel



A1  
Grade

Charvak Shah  
PR :99.44 | 631/700

1<sup>st</sup>  
St. Xavier's



A2  
Grade

Khyati Pandya  
PR :99.08 | 622/700

3<sup>rd</sup>  
MB Patel School



A2  
Grade

Pradeep Joshi  
PR :98.64 | 614/700

2<sup>nd</sup>  
RG Patel School



A2  
Grade

Naaz Pathan  
PR :98.58 | 613/700

2<sup>nd</sup>  
St. Xavier's



A2  
Grade

Dhruvika Chudasma  
PR :98.26 | 608/700

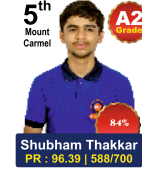
3<sup>rd</sup>  
St. Xavier's



A2  
Grade

Aditi Rupala  
PR :97.55 | 599/700

5<sup>th</sup>  
Mount Carmel



A2  
Grade

Shubham Thakkar  
PR :96.39 | 588/700

6<sup>th</sup>  
Mount Carmel



A2  
Grade

Kush Adalja  
PR :95.58 | 581/700

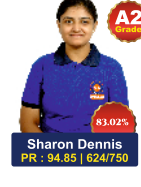
6<sup>th</sup>  
Mount Carmel



A2  
Grade

Maheknaaz Pathan  
PR :95.40 | 580/700

6<sup>th</sup>  
Mount Carmel



A2  
Grade

Sharon Dennis  
PR :94.85 | 624/750

6<sup>th</sup>  
Mount Carmel



A2  
Grade

Ved Patel  
PR :93.46 | 615/750

6<sup>th</sup>  
Mount Carmel



A2  
Grade

Akshat Rana  
PR :95.27 | 579/700

6<sup>th</sup>  
Mount Carmel



A2  
Grade

Smitkumar Parmar  
PR :93.28

3<sup>rd</sup>  
Gandul Tower



A2  
Grade

Meet Patel  
PR :92.59 | 612/750

6<sup>th</sup>  
Mount Carmel



A2  
Grade

Krish Sohagia  
PR :92.95 | 564/700



ફ્રી ટ્રાન્સપોર્ટ  
સુવિધા \*



લાઇવ  
ક્લેસ



પાસ થવાની  
ગેરંટી

Our Achievements

Trusted by  
5K+  
Parents

Profession  
100+  
CA/CS

Successful  
2K+  
Businessman

Private  
jobs  
2K+



દિકરીઓ માટે અલગ બેચ  
★ બેચમા મર્યાદિત સંખ્યા

Admission  
Open

Std. 11-12 Com. GSEB/CBSE Guj./Eng. Med.  
Std. 6-10 Guj Med.

99091 58901

નબળા બાળકોની ક્ષમતા(શક્તિ) ખીલી શકે..તે માટે તેમના પર વધુ ધ્યાન આપવામાં આવશે...

Digital Classroom

Video Lecture

Color Book  
Study Material

Batch Starting @

**MAHI COMMERCE ZONE**

Head Office : 207, 307 Shalin Galleria, Nr.G-1 Sangeet Circle, Gandhinagar

Branch : Sector 28, Below SBI Bank,Opp. Pagrav Hospital, Gandhinagar

Branch : Coming Soon - Kudasan, Gandhinagar

Std.	Medium	Date
6 <sup>th</sup> to 9 <sup>th</sup>	Guj.Med.	6 <sup>th</sup> - June
10 <sup>th</sup>	Guj.Med.	1 <sup>st</sup> - May
11 <sup>th</sup> Com	Guj./Eng. Med	1 <sup>st</sup> May-6 <sup>th</sup> June
12 <sup>th</sup> Com	Guj./Eng. Med	16 <sup>th</sup> - April



# MAHI COMMERCE ZONE

## ગાંધીનગર જિલ્લામાં સૌથી વધુ ડેઝ A-1 & A-2 ઝેઝ ધરાવતા એકમાત્ર કોમર્સ ક્લાસીસ માહી કોમર્સ ઝોન

### 2021

**1<sup>st</sup>** AIS  
**1<sup>st</sup>** Gurukul

**Board 5<sup>th</sup>**  
Harishree N. Patel  
PR-99.95  
646/700

**Board 6<sup>th</sup>**  
Vishava B. Patel  
PR-99.94  
694/750

<b>2<sup>nd</sup></b> AIS Yuvraj R. Nandanvar PR-99.71 619/700	<b>1<sup>st</sup></b> Gurukul Ayushi J. Thakkar PR-99.66 664/750	<b>1<sup>st</sup></b> Navsahana School Albad Krishi D Parekh PR-99.61 612/700	<b>8<sup>th</sup></b> R.C. Patel Artiba K Dodiya PR-99.34 600/700	<b>2<sup>nd</sup></b> Gurukul Tower Smit K. Shah PR-98.72 632/700	<b>3<sup>rd</sup></b> Gurukul Tower Vanshika K. Chavda PR-98.62 630/750
<b>4<sup>th</sup></b> Gurukul Tower Sonuben V. Chaudhari PR-98.53 628/700	<b>5<sup>th</sup></b> Gurukul Tower Pooja K. Pancholi PR-98.38 625/700	<b>6<sup>th</sup></b> Gurukul Tower Mohan T. Rabari PR-98.10 619/750	<b>2<sup>nd</sup></b> Gurukul Tower Priyanshi H Prajapati PR-98.43 576/700	<b>2<sup>nd</sup></b> Gurukul Tower Hiralben K. Dabhi PR-98.32 574/700	<b>2<sup>nd</sup></b> Gurukul Tower Adityarajsinh H. Jhala PR-97.04 604/750

### 2020

**1<sup>st</sup>** H.B. Kapadiya

**Board 4<sup>th</sup>**  
Maanjal Sen  
PR : 99.96

<b>2<sup>nd</sup></b> Mount Carmel Devyani Patel PR : 99.84	<b>1<sup>st</sup></b> R.G. Patel Nandini Darji PR : 99.49	<b>1<sup>st</sup></b> Gurukul Hardik Patel PR : 99.43	<b>1<sup>st</sup></b> Vivekanand Chintan Khasatiya PR : 99.17	<b>3<sup>rd</sup></b> St.Xavier's Komal Modi PR : 99.06	<b>4<sup>th</sup></b> St.Xavier's Devrajsinh Kumpawat PR : 98.98	<b>2<sup>nd</sup></b> Gurukul Sijan Vohra PR : 98.86
<b>2<sup>nd</sup></b> Gurukul Krishna Jatiya PR : 98.77	<b>5<sup>th</sup></b> M.B. Patel Saurabh Birje PR : 98.72	<b>5<sup>th</sup></b> St.Xavier's Vrunda Raval PR : 98.67	<b>2<sup>nd</sup></b> Gurukul Priyanka Chauhan PR : 98.57	<b>2<sup>nd</sup></b> Gurukul Riddhi Patel PR : 98.18	<b>2<sup>nd</sup></b> Gurukul Ganpat Mistri PR : 97.82	<b>3<sup>rd</sup></b> Gurukul Happy Bhati PR : 97.45

### 2019

**1<sup>st</sup>** St. Xavier's

**Board 13<sup>th</sup>**  
Thakkar Shruti  
PR : 99.86  
Stat 96 / 100 | Eco 93 / 100

<b>1<sup>st</sup></b> Gurukul Shah Prachi PR : 99.78	<b>3<sup>rd</sup></b> R.G. Patel Shah Kanvi PR : 99.71	<b>4<sup>th</sup></b> R.G. Patel Shah Jinal PR : 99.52	<b>3<sup>rd</sup></b> St.Xavier's Priyadarshi Khushbu PR : 99.31	<b>1<sup>st</sup></b> Achiever Raol Meghal PR : 99.21	<b>4<sup>th</sup></b> M.B. Patel Jaiswal Aryanam PR : 98.78
<b>4<sup>th</sup></b> St.Xavier's Bhatt Jaydip PR : 97.91	<b>2<sup>nd</sup></b> R.C. Patel Raol Chihaya PR : 98.89	<b>2<sup>nd</sup></b> R.G. Patel Raol Pritiba PR : 98.79	<b>3<sup>rd</sup></b> Ved International Yatri Patel PR : 97.60	<b>5<sup>th</sup></b> Achiever Patel Pooja PR : 97.11	<b>5<sup>th</sup></b> St.Xavier's Rathod Adityaraj PR : 96.96

### 2018

<b>1<sup>st</sup></b> ગાંધીનગર R.C.Patel Janvi Chavda PR : 99.96 A/c 100 / 100   Stat 98 / 100 Centre First	<b>1<sup>st</sup></b> Gurukul Mansi Patel PR : 99.91 Stat 99 / 100   A/c 95 / 100 Centre Third	<b>2<sup>nd</sup></b> R.G.Patel Kanisha Rathod PR : 99.88 Eco 97 / 100   Stat 95 / 100 Centre Sixth	<b>2<sup>nd</sup></b> R.G.Patel Vidhi Suthar PR : 99.88 A/c 98 / 100   Eco 96 / 100 Centre Sixth
---	--	---	--

**2<sup>nd</sup>** Gurukul  
Mansi Thakkar  
PR : 98.3%

**3<sup>rd</sup>** R.G. Patel  
Riya Nayak  
PR : 99.74

સ્કૂલ કોઈપણ હોય ટ્યુશન તો માહી કોમર્સ ઝોનમાં જ..

100% Results  
Dashrath Sir  
99091 58901

No.1  
Commerce  
classes

કોઈ પણ ટ્યુશનમાં પ્રવેશ લેતા પહેલા રૂબરૂ મુલાકાત લો..

# MAHI COMMERCE ZONE

www.mahicommercezone.com